



OAKRIDGE
PARK

Oakridge Park



Vancouver's
West Side



Vancouver's West Side

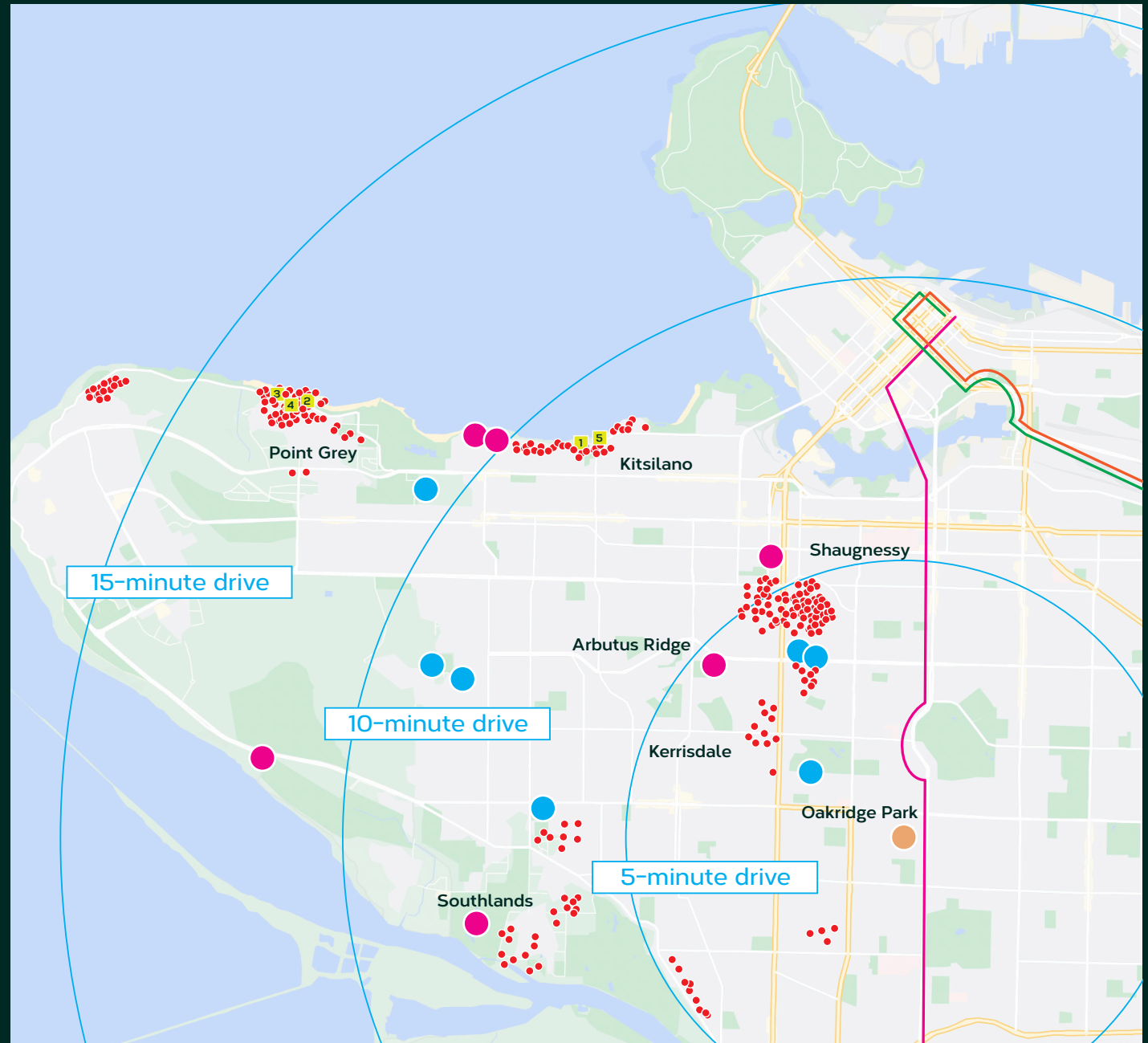
- Oakridge Park
- Private Schools
- Private Clubs

● **Top 500 Valued Homes in BC**
(317, or 63% of top 500 homes located in Vancouver's West Side)

■ **Top Five Valued Homes in BC**

1. 3085 Point Grey Rd. - \$73.1M
2. 4707 Belmont Ave. - \$64.6M
3. 4743 Belmont Ave. - \$40.9M
4. 4719 Belmont Ave. - \$39.9M

- Canada Line
- Millennium Line
- Expo Line



Map courtesy of Google Maps

Buying Into Vancouver's West Side

Baseline Single-Family Home Price
in Vancouver's West Side

- | 3 Bedroom – \$4.15M
- | 4 Bedroom – \$5.26M
- | 5 Bedroom – \$ 6.12M

1196 W 48th Avenue
\$6,890,000



5756 Alma Street
\$5,880,000

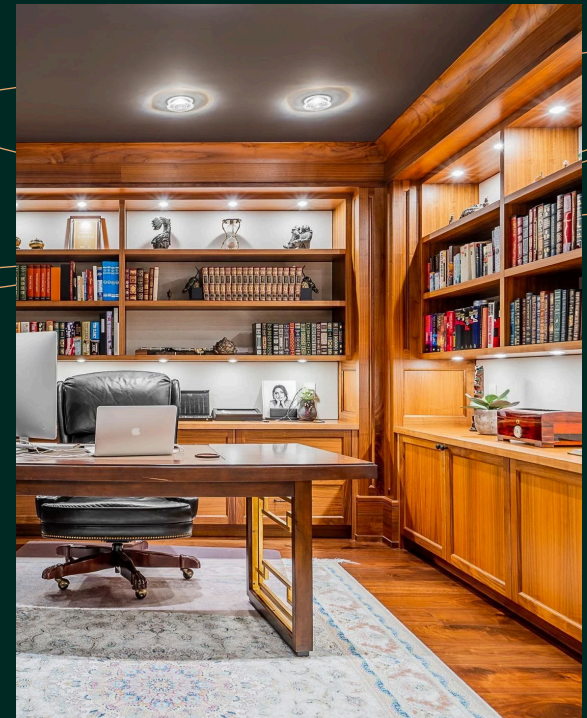
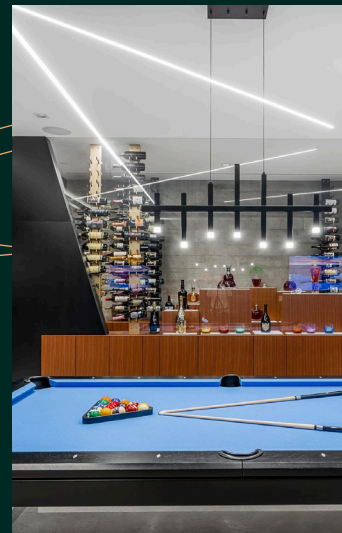


*Average values calculated from REMAX listings, June 2022

Vancouver's West Side is home to some of the most valuable and luxurious real estate in Canada. With close proximity to the downtown core, YVR airport, exclusive clubs, private marinas, and beaches with mountain backdrops, Vancouver's West Side truly caters to the ultra-wealthy.

The Upper Echelon

1233 Tecumseh Avenue
Shaughnessy
\$29,999,000



West Side Wealth

Left
Shaughnessy

1126 Wolfe Avenue
\$24,880,000

Right
Southlands

2870 SW Marine Drive
\$19,900,000

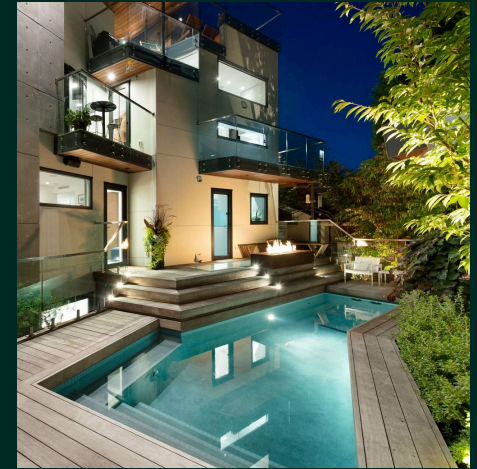


Left
Point Grey

4788 Belmont Avenue
\$33,888,000

Right
Arbutus Ridge

5038 Arbutus Street
\$11,880,880



Left
Kerrisdale

626 Avondale Avenue
\$16,900,000

Right
Kitsilano

2883 Point Grey Road
\$25,800,000



West Side Private Schools

St George's

Type All boys school, grades K - 12
Tuition \$57,600 - \$78,300 /yr
Distance 5.8 km from Oakridge Park

York House

Type All girls school, grades K - 12
Tuition \$24,200 /yr
Distance 3.3 km from Oakridge Park

Crofton House

Type All girls school, grades K - 12
Tuition \$26,200 /yr
Distance 6.1 km from Oakridge Park

Vancouver College

Type All boys school, grades K - 12
Tuition \$8,600 - \$22,860 /yr
Distance 4.5 km from Oakridge Park

West Point Grey Academy

Type Boys and girls school, grades K - 12
Tuition \$8,400 - \$22,600 /yr
Distance 5.6 km from Oakridge Park

Little Flower Academy

Type All girls school, grades 8 - 12
Tuition \$8,000 /yr
Distance 3.4 km from Oakridge Park



St. George's Private School,
Currently Under Construction

Arbutus Club

Type Private Recreational Club

Join Fee \$65,000

Distance 3.7 km from Oakridge Park

Shaughnessy Golf & Country Club

Type Private Golf Club

Join Fee \$70,000

Distance 7.9 km from Oakridge Park

Jericho Tennis Club

Type Private Tennis Club

Join Fee \$23,000

Distance 4.8 km from Oakridge Park

Point Grey Golf & Country Club

Type Private Golf Club

Join Fee \$45,000 - \$50,000

Distance 5.3 km from Oakridge Park

Vancouver Lawn Tennis Club

Type Private Tennis and Badminton Club

Join Fee \$23,000

Distance 2.4 km from Oakridge Park

Southlands Riding Club

Type Private Polo and Equestrian Club

Join Fee \$1,000

Distance 4.8 km from Oakridge Park

West Side Private Clubs



Top: Jericho Tennis Club Bottom: Vancouver Lawn Tennis Club

Luxury Cars On The West Side

Vancouver's West Side is home to one of the highest luxury car densities in the world. Whether driving to and from work, or to a dinner party, affluent and status-driven individuals living on the West Side desire to ride in style.

Dealerships located 10
minutes from Oakridge Park

- Audi
- Bentley
- BMW
- Ferrari
- Jaguar
- Land Rover
- Lamborghini
- McLaren
- Rolls Royce
- Tesla



West Side Lifestyle

Meet Lily.

Lily and her husband, David, live in Vancouver's prestigious Shaughnessy neighbourhood.

A typical day for Lily consists of dropping her three kids off at St. George's private school before heading to the country club for her private golf lesson. After unwinding with an artisan cocktail from the lounge, Lily goes window shopping with her friend for a new pair of stilettos to wear to tonight's art gala. Lily is delighted to find the perfect pair for the occasion, not forgetting the matching handbag from the collection.

Lily returns home to get ready for the evening and is happy to see that her husband is home early from his afternoon tennis match with his business partners.



Driving Tour Route Instructions

1. Head west from Oakridge Park on 41st Avenue
2. Turn right on Oak Street
3. Turn right on Matthews Avenue, then turn right on Selkirk Street
4. Turn left on Laurier Avenue, then turn left on Osler Street
5. Continue Osler Street and turn right on The Crescent roundabout.
Turn right on Angus Drive and continue straight across Oak Street
6. Follow Angus Drive to 57th Avenue, then turn right
7. After one block, turn left on Wiltshire Street
8. Continue north on Wiltshire Street until 41st Avenue, then turn right
9. Continue east on 41st Avenue for 2 km and arrive back at Oakridge Park

Route Length – 13.5 km

Estimated route duration – 15 minutes

